



# Wii U GamePad Outer Case Replacement

Remove the outer case in order to open the inside of the Gamepad

Written By: Valentina Cerruty



---

## INTRODUCTION

This guide will help you to remove the outer case and be able to open the Nintendo Wii U Gamepad. You will need a Tri-Wing Y1 screw driver.

---



### TOOLS:

- [Phillips #0 Screwdriver](#) (1)
  - [Y1 Tri-point Screwdriver](#) (1)
-

## Step 1 — Battery



- Place Gamepad face down and remove the two 4.7 mm screws with a Phillips size #00 screwdriver.

## Step 2



- Lift and remove the battery plate.

## Step 3



- With your finger, press down and pull back on the battery connector plug.
- Remove the battery from the battery case.

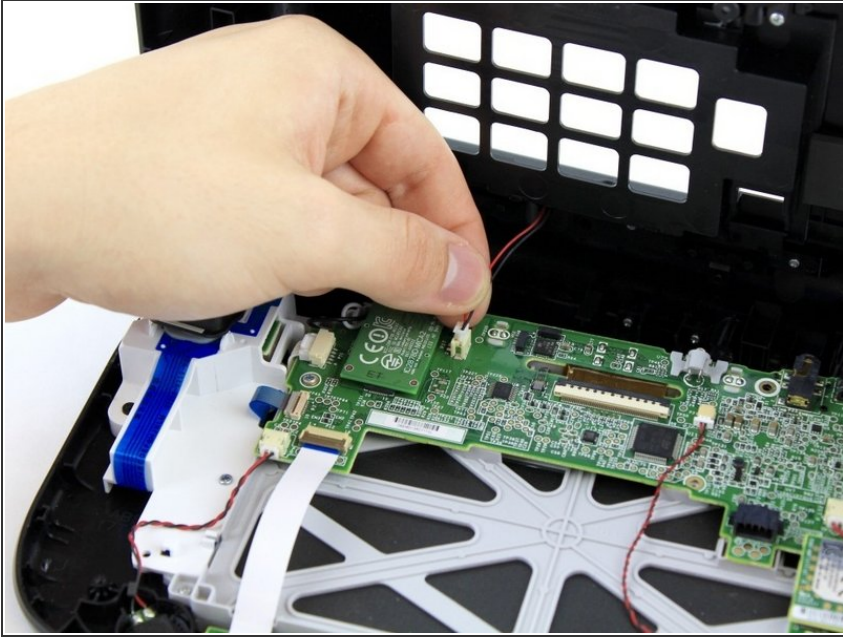
## Step 4 — Outer Case



- Remove 10 9mm screws with Tri-Wing size Y1 screwdriver around the outer case.
- Lift up on the back of case.
- ⚠ Lift gently because the rumble motor in the back of the case is still connected by a cable to the motherboard.



## Step 5



- Unplug outer case rumble motor connector from the motherboard with your fingers.

To reassemble your device, follow these instructions in reverse order.